

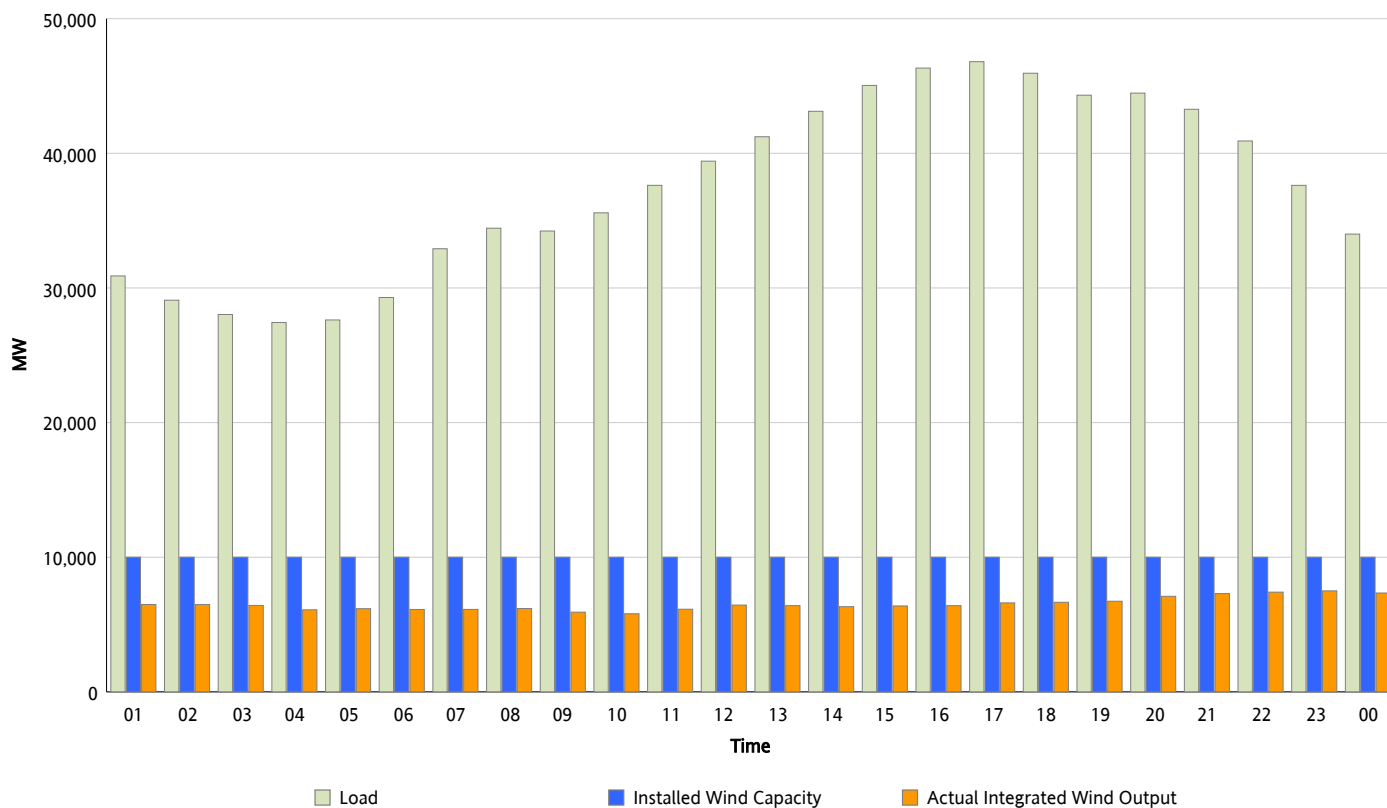


ERCOT Grid Operations

Wind Integration Report : 10/24/2012

Peak Load	46,808 MW
Load Peak Hour (HE)	17
Wind Over Peak	6,610 MW
Wind Record 06/19/12	8,368 MW
Max Wind Value*	7,590 MW
Wind Peak Time	22:15
Wind Integration %	19.63 %

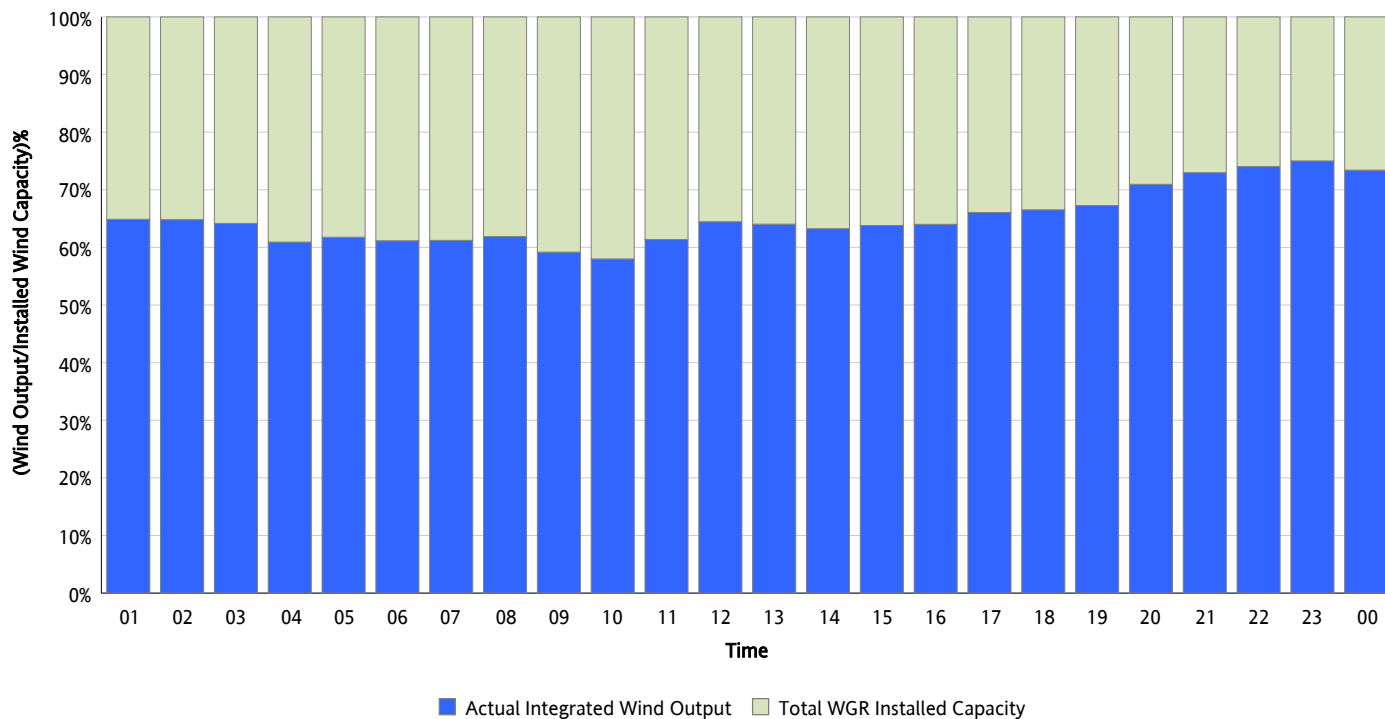
Hourly Average Actual Load vs. Actual Wind Output
10/24/2012



* Wind Record and Wind Max represent instantaneous values and the rest of the values are integrated over the hour

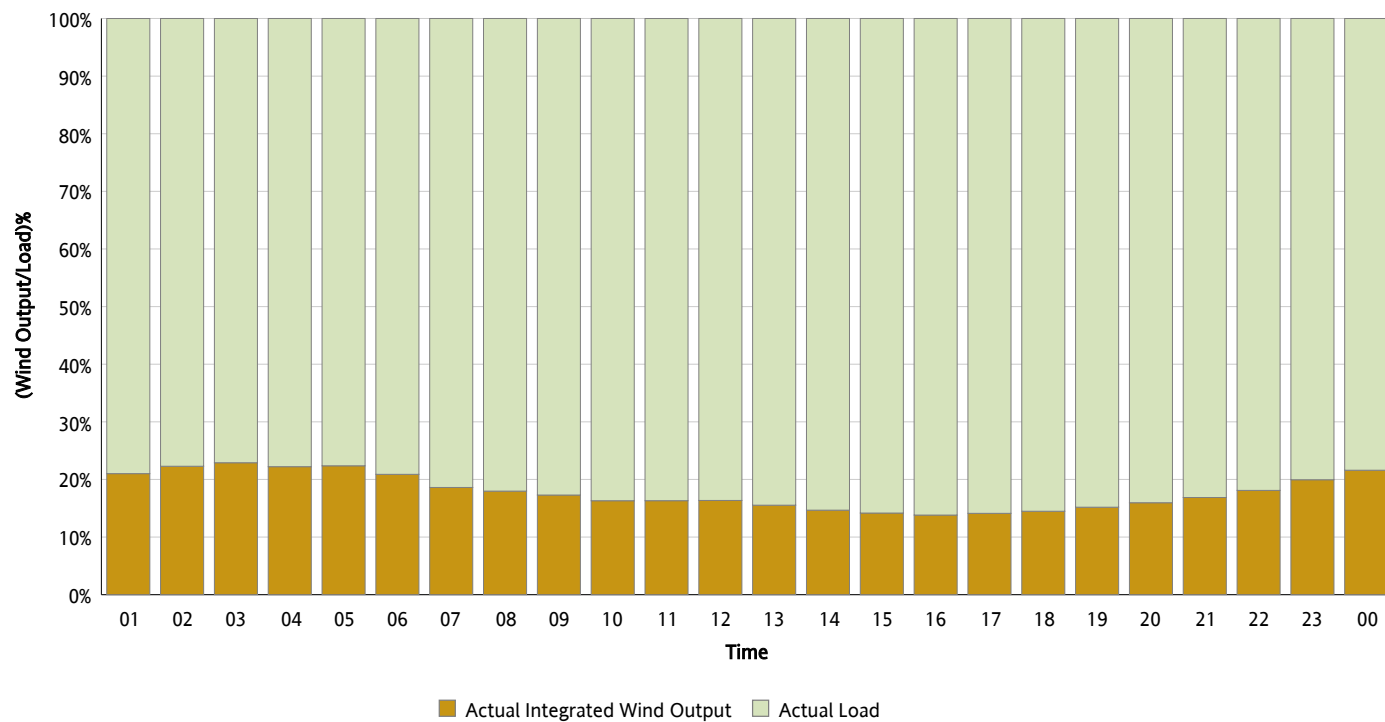
Actual Wind Output as a Percentage of the Total Installed Wind Capacity

10/24/2012



Actual Wind Output as a Percentage of the ERCOT Load

10/24/2012



ERCOT Load vs. Actual Wind Output

10/17/2012 - 10/24/2012

